

# Dell™ Inspiron™ 1012 Service Manual

[Before You Begin](#)

[Battery](#)

[Keyboard](#)

[Memory Module](#)

[Hard-Drive Assembly](#)

[Palm Rest Assembly](#)

[Power Button Board](#)

[Touch Pad Module](#)

[Internal Card With Bluetooth® Wireless Technology](#)

[Processor Heat Sink](#)

[Wireless Mini-Card\(s\)](#)

[Video Accelerator Card](#)

[Hinge Cover](#)

[Display](#)

[Camera Module](#)

[Speakers](#)

[Support Bracket](#)

[\(s\)](#)

[I/O Board](#)

[Status Light](#)

[Board](#)

[System Board](#)

[AC Adapter](#)

[Connector](#)




[Coin-Cell Battery](#)

[SIM Card Board](#)

[Flashing the BIOS](#)

---

## Notes, Cautions, and Warnings

-  **NOTE:** A NOTE indicates important information that helps you make better use of your computer.
-  **CAUTION:** A CAUTION indicates potential damage to hardware or loss of data if instructions are not followed.
-  **WARNING:** A WARNING indicates a potential for property damage, personal injury, or death.

---

Information in this document is subject to change without notice.  
© 2010 Dell Inc. All rights reserved.

Reproduction of these materials in any manner whatsoever without the written permission of Dell Inc. is strictly forbidden.

Trademarks used in this text: *Dell*, the *DELL* logo, and *Inspiron* are trademarks of Dell Inc.; *Bluetooth* is a registered trademark owned by Bluetooth SIG, Inc. and is used by Dell under license; *Microsoft* and *Windows* are either trademarks or registered trademarks of Microsoft Corporation in the United States and/or other countries.

Other trademarks and trade names may be used in this document to refer to either the entities claiming the marks and names or their products. Dell Inc. disclaims any proprietary interest in trademarks and trade names other than its own.

Regulatory model P04T series Regulatory type P04T001

January 2010 Rev. A00

[Back to Contents Page](#)

## Battery

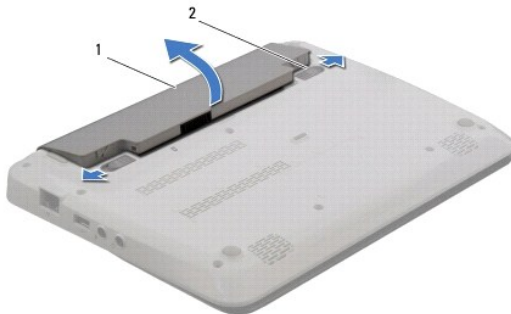
### Dell™ Inspiron™ 1012 Service Manual

- [Removing the Battery](#)
- [Replacing the Battery](#)

- WARNING:** Before working inside your computer, read the safety information that shipped with your computer. For additional safety best practices information, see the Regulatory Compliance Homepage at [www.dell.com/regulatory\\_compliance](http://www.dell.com/regulatory_compliance).
- CAUTION:** To avoid electrostatic discharge, ground yourself by using a wrist grounding strap or by periodically touching an unpainted metal surface (such as a connector on your computer).
- CAUTION:** Only a certified service technician should perform repairs on your computer. Damage due to servicing that is not authorized by Dell™ is not covered by your warranty.
- CAUTION:** To avoid damage to the computer, use only the battery designed for this particular Dell computer. Do not use batteries designed for other Dell computers.
- 

## Removing the Battery

1. Follow the procedures in [Before You Begin](#).
2. Turn the computer over.
3. Slide the battery release latches to the unlock position.
4. Rotate and lift the battery out of the battery bay.



1	battery	2	battery release latches (2)
---	---------	---	-----------------------------

---

## Replacing the Battery

- CAUTION:** To avoid damage to the computer, use only the battery designed for this particular Dell computer.

Align the tabs on the battery with the slots in the battery bay and gently press the battery until it clicks into place.

---

[Back to Contents Page](#)

[Back to Contents Page](#)

## Before You Begin

### Dell™ Inspiron™ 1012 Service Manual

- [Recommended Tools](#)
- [Turning Off Your Computer](#)
- [Before Working Inside Your Computer](#)

This manual provides procedures for removing and installing the components in your computer. Unless otherwise noted, each procedure assumes that the following conditions exist:

- 1 You have performed the steps in [Turning Off Your Computer](#) and [Before Working Inside Your Computer](#).
- 1 You have read the safety information that shipped with your computer.
- 1 A component can be replaced or—if purchased separately—installed by performing the removal procedure in reverse order.

---

## Recommended Tools

The procedures in this document may require the following tools:

- 1 Small flat-blade screwdriver
- 1 Phillips screwdriver
- 1 Plastic scribe
- 1 BIOS executable update program at [support.dell.com](http://support.dell.com)

---

## Turning Off Your Computer

 **CAUTION:** To avoid losing data, save and close all open files and exit all open programs before you turn off your computer.

1. Save and close all open files and exit all open programs.
2. In Microsoft® Windows XP, click **Start**→**Shut Down**.

In Microsoft Windows 7, click **Start**  , click the arrow  , and then click **Shut Down**.


The computer turns off after the operating system shutdown process finishes.


3. Ensure that the computer and any attached devices are turned off. If your computer and attached devices did not automatically turn off when you shut down your operating system, press and hold the power button for at least 8 to 10 seconds until the computer turns off.


---


## Before Working Inside Your Computer


Use the following safety guidelines to help protect your computer from potential damage and to help to ensure your own personal safety.


 **WARNING:** Before working inside your computer, read the safety information that shipped with your computer. For additional safety best practices information, see the Regulatory Compliance Homepage at [www.dell.com/regulatory\\_compliance](http://www.dell.com/regulatory_compliance).

 **CAUTION:** To avoid electrostatic discharge, ground yourself by using a wrist grounding strap or by periodically touching an unpainted metal surface (such as a connector on your computer).


 **CAUTION:** Handle components and cards with care. Do not touch the components or contacts on a card. Hold a card by its edges or by its metal mounting bracket. Hold a component such as a processor by its edges, not by its pins.

 **CAUTION:** Only a certified service technician should perform repairs on your computer. Damage due to servicing that is not authorized by Dell™ is not covered by your warranty.


 **CAUTION:** When you disconnect a cable, pull on its connector or on its pull-tab, not on the cable itself. Some cables have connectors with locking tabs; if you are disconnecting this type of cable, press in on the locking tabs before you disconnect the cable. As you pull connectors apart, keep them evenly aligned to avoid bending any connector pins. Also, before you connect a cable, ensure that both connectors are correctly oriented and aligned.

 **CAUTION:** To avoid damaging the computer, perform the following steps before you begin working inside the computer.

1. Ensure that the work surface is flat and clean to prevent the computer cover from being scratched.
2. Turn off your computer (see [Turning Off Your Computer](#)).

 **CAUTION:** To disconnect a network cable, first unplug the cable from your computer and then unplug the cable from the network device.

3. Disconnect all telephone or network cables from the computer.
4. Press and eject any installed cards from the 3-in-1 Media Card Reader.
5. Disconnect your computer and all attached devices from their electrical outlets.

 **CAUTION:** To help prevent damage to the system board, remove the main battery (see [Removing the Battery](#)) before working inside the computer.

6. Remove the battery (see [Removing the Battery](#)).
7. Turn the computer top-side up, open the display, and press the power button to ground the system board.


---

[Back to Contents Page](#)

## Flashing the BIOS

### Dell™ Inspiron™ 1012 Service Manual

1. Turn on the computer.
2. Go to [support.dell.com/support/downloads](http://support.dell.com/support/downloads).
3. Locate the BIOS update file for your computer:


 **NOTE:** The Service Tag for your computer is located at the bottom of the computer.

If you have your computer's Service Tag:

- a. Click **Enter a Service Tag**.
- b. Enter your computer's Service Tag in the **Enter a service tag:** field, click **Go**, and proceed to [step 4](#).

If you do not have your computer's Service Tag:

- a. Click **Select Model**.
- b. Select the type of product in the **Select Your Product Family** list.
- c. Select the product brand in the **Select Your Product Line** list.
- d. Select the product model number in the **Select Your Product Model** list.

 **NOTE:** If you have selected a different model and want to start over again, click **Start Over** on the top right of the menu.

- e. Click **Confirm**.
4. A list of results appear on the screen. Click **BIOS**.
  5. Click **Download Now** to download the latest BIOS file.  
The **File Download** window appears.
  6. Click **Save** to save the file on your desktop. The file downloads to your desktop.
  7. Click **Close** if the **Download Complete** window appears.  
The file icon appears on your desktop and is titled the same as the downloaded BIOS update file.
  8. Double-click the file icon on the desktop and follow the instructions on the screen.
-

[Back to Contents Page](#)

## Internal Card With Bluetooth® Wireless Technology

Dell™ Inspiron™ 1012 Service Manual

- [Removing the Bluetooth Card](#)
- [Replacing the Bluetooth Card](#)

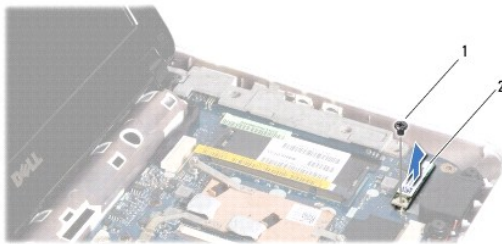
- WARNING:** Before working inside your computer, read the safety information that shipped with your computer. For additional safety best practices information, see the Regulatory Compliance Homepage at [www.dell.com/regulatory\\_compliance](http://www.dell.com/regulatory_compliance).
- CAUTION:** To avoid electrostatic discharge, ground yourself by using a wrist grounding strap or by periodically touching an unpainted metal surface (such as a connector on your computer).
- CAUTION:** Only a certified service technician should perform repairs on your computer. Damage due to servicing that is not authorized by Dell™ is not covered by your warranty.
- CAUTION:** To help prevent damage to the system board, remove the main battery (see [Removing the Battery](#)) before working inside the computer.

If you ordered a card with Bluetooth wireless technology with your computer, it is already installed.

---

### Removing the Bluetooth Card

1. Follow the procedures in [Before You Begin](#).
2. Remove the battery (see [Removing the Battery](#)).
3. Remove the keyboard (see [Removing the Keyboard](#)).
4. Remove the hard-drive assembly (see [Removing the Hard-Drive Assembly](#)).
5. Remove the palm rest assembly (see [Removing the Palm Rest Assembly](#)).
6. Remove the screw that secures the Bluetooth card to the system board.
7. Lift the Bluetooth card to disconnect it from the connector on the system board.



1	screw	2	Bluetooth card
---	-------	---	----------------


---

### Replacing the Bluetooth Card

1. Follow the procedures in [Before You Begin](#).
2. Align the connector on the Bluetooth card with the connector on the system board and press gently.
3. Replace the screw that secures the Bluetooth card to the system board.
4. Replace the palm rest assembly (see [Replacing the Palm Rest Assembly](#)).
5. Replace the hard-drive assembly (see [Replacing the Hard-Drive Assembly](#)).

6. Replace the keyboard (see [Replacing the Keyboard](#)).

7. Replace the battery (see [Replacing the Battery](#)).

 **CAUTION:** Before turning on the computer, replace all screws and ensure that no stray screws remain inside the computer. Failure to do so may result in damage to the computer.

---

[Back to Contents Page](#)

## Camera Module

### Dell™ Inspiron™ 1012 Service Manual

- [Removing the Camera Module](#)
- [Replacing the Camera Module](#)

- WARNING:** Before working inside your computer, read the safety information that shipped with your computer. For additional safety best practices information, see the Regulatory Compliance Homepage at [www.dell.com/regulatory\\_compliance](http://www.dell.com/regulatory_compliance).
- CAUTION:** To avoid electrostatic discharge, ground yourself by using a wrist grounding strap or by periodically touching an unpainted metal surface (such as a connector on your computer).
- CAUTION:** Only a certified service technician should perform repairs on your computer. Damage due to servicing that is not authorized by Dell™ is not covered by your warranty.
- CAUTION:** To help prevent damage to the system board, remove the main battery (see [Removing the Battery](#)) before working inside the computer.
- 

## Removing the Camera Module

1. Follow the procedures in [Before You Begin](#).
2. Remove the battery (see [Removing the Battery](#)).
3. Remove the keyboard (see [Removing the Keyboard](#)).
4. Remove the hard-drive assembly (see [Removing the Hard-Drive Assembly](#)).
5. Remove the palm rest assembly (see [Removing the Palm Rest Assembly](#)).
6. Remove the hinge cover (see [Removing the Hinge Cover](#)).
7. Remove the display assembly (see [Removing the Display Assembly](#)).
8. Remove the display bezel (see [Removing the Display Bezel](#)).
9. Disconnect the camera cable from the connector on the camera module.
10. Gently remove the camera module stuck to the display cover.



1	camera module	2	camera cable connector
---	---------------	---	------------------------


---

## Replacing the Camera Module

1. Follow the procedures in [Before You Begin](#).
2. Use the alignment posts to place the camera module on the display cover.



3. Adhere the camera module in position.
4. Connect the camera cable to the connector on the camera module.
5. Replace the display bezel (see [Replacing the Display Bezel](#)).
6. Replace the display assembly (see [Replacing the Display Assembly](#)).
7. Replace the hinge cover (see [Replacing the Hinge Cover](#)).
8. Replace the palm rest assembly(see [Replacing the Palm Rest Assembly](#)).
9. Replace the hard-drive assembly (see [Replacing the Hard-Drive Assembly](#)).
10. Replace the keyboard (see [Replacing the Keyboard](#)).
11. Replace the battery (see [Replacing the Battery](#)).

 **CAUTION:** Before turning on the computer, replace all screws and ensure that no stray screws remain inside the computer. Failure to do so may result in damage to the computer.

---

[Back to Contents Page](#)

[Back to Contents Page](#)

## Coin-Cell Battery

Dell™ Inspiron™ 1012 Service Manual

- [Removing the Coin-Cell Battery](#)
- [Replacing the Coin-Cell Battery](#)

- WARNING:** Before working inside your computer, read the safety information that shipped with your computer. For additional safety best practices information, see the Regulatory Compliance Homepage at [www.dell.com/regulatory\\_compliance](http://www.dell.com/regulatory_compliance).
- CAUTION:** To avoid electrostatic discharge, ground yourself by using a wrist grounding strap or by periodically touching an unpainted metal surface (such as a connector on your computer).
- CAUTION:** Only a certified service technician should perform repairs on your computer. Damage due to servicing that is not authorized by Dell™ is not covered by your warranty.
- CAUTION:** To help prevent damage to the system board, remove the main battery (see [Removing the Battery](#)) before working inside the computer.
- 

### Removing the Coin-Cell Battery

1. Follow the procedures in [Before You Begin](#).
2. Remove the battery (see [Removing the Battery](#)).
3. Follow the instructions from [step 2](#) to [step 18](#) in [Removing the System Board](#).
4. Use a plastic scribe and gently pry the coin-cell out of the battery socket on the system board.



1	plastic scribe	2	coin-cell battery
---	----------------	---	-------------------

---

### Replacing the Coin-Cell Battery

1. Follow the procedures in [Before You Begin](#).
  2. With the positive side up, snap the coin-cell battery into the battery socket on the system board.
  3. Follow the instructions from [step 3](#) to [step 21](#) in [Replacing the System Board](#).
- CAUTION:** Before turning on the computer, replace all screws and ensure that no stray screws remain inside the computer. Failure to do so may result in damage to the computer.
- 

[Back to Contents Page](#)

## Processor Heat Sink

### Dell™ Inspiron™ 1012 Service Manual

- [Removing the Processor Heat Sink](#)
- [Replacing the Processor Heat Sink](#)

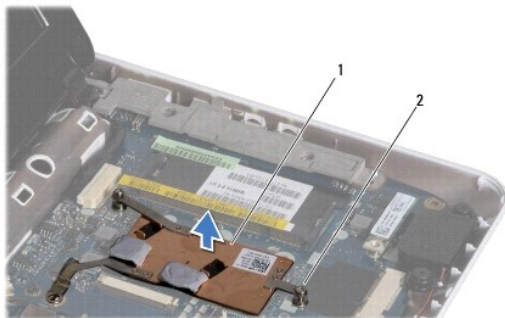
- WARNING:** Before working inside your computer, read the safety information that shipped with your computer. For additional safety best practices information, see the Regulatory Compliance Homepage at [www.dell.com/regulatory\\_compliance](http://www.dell.com/regulatory_compliance).
- WARNING:** If you remove the processor heat sink from the computer when the heat sink is hot, do not touch the metal housing of the heat sink.
- CAUTION:** To avoid electrostatic discharge, ground yourself by using a wrist grounding strap or by periodically touching an unpainted metal surface (such as a connector on your computer).
- CAUTION:** Only a certified service technician should perform repairs on your computer. Damage due to servicing that is not authorized by Dell™ is not covered by your warranty.
- CAUTION:** To help prevent damage to the system board, remove the main battery (see [Removing the Battery](#)) before working inside the computer.

## Removing the Processor Heat Sink

1. Follow the procedures in [Before You Begin](#).
2. Remove the battery (see [Removing the Battery](#)).
3. Remove the keyboard (see [Removing the Keyboard](#)).
4. Remove the hard-drive assembly (see [Removing the Hard-Drive Assembly](#)).
5. Remove the palm rest assembly (see [Removing the Palm Rest Assembly](#)).
6. Loosen the two captive screws that secure the processor heat sink to the system board.

**NOTE:** The video accelerator card (optional) is secured by the processor heat sink screw and will pop up once you remove the processor heat sink.

7. Lift the processor heat sink off the system board.




1	processor heat sink	2	captive screws (2)
---	---------------------	---	--------------------

## Replacing the Processor Heat Sink

- NOTE:** This procedure assumes that you have already removed the processor heat sink and are ready to replace it.
- NOTE:** The original thermal pad can be reused if the original heat sink is reinstalled. If the heat sink is replaced, use the thermal pad provided in the kit to ensure that thermal conductivity is achieved.

1. Follow the procedures in [Before You Begin](#).

2. Press down the video accelerator card in the slot and place the processor heat sink on the system board.
3. Align the two captive screws on the processor heat sink with the screw holes on the system board and tighten the two screws.
4. Replace the palm rest assembly (see [Replacing the Palm Rest Assembly](#)).
5. Replace the hard-drive assembly (see [Replacing the Hard-Drive Assembly](#)).
6. Replace the keyboard (see [Replacing the Keyboard](#)).
7. Replace the battery (see [Replacing the Battery](#)).

 **CAUTION:** Before turning on the computer, replace all screws and ensure that no stray screws remain inside the computer. Failure to do so may result in damage to the computer.

---

[Back to Contents Page](#)

[Back to Contents Page](#)

## AC Adapter Connector

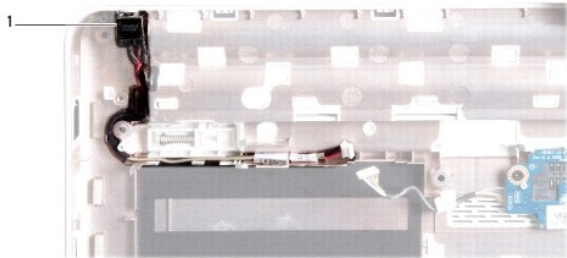
Dell™ Inspiron™ 1012 Service Manual

- [Removing the AC Adapter Connector](#)
- [Replacing the AC Adapter Connector](#)

- WARNING:** Before working inside your computer, read the safety information that shipped with your computer. For additional safety best practices information, see the Regulatory Compliance Homepage at [www.dell.com/regulatory\\_compliance](http://www.dell.com/regulatory_compliance).
- CAUTION:** To avoid electrostatic discharge, ground yourself by using a wrist grounding strap or by periodically touching an unpainted metal surface (such as a connector on your computer).
- CAUTION:** Only a certified service technician should perform repairs on your computer. Damage due to servicing that is not authorized by Dell™ is not covered by your warranty.
- CAUTION:** To help prevent damage to the system board, remove the main battery (see [Removing the Battery](#)) before working inside the computer.
- 

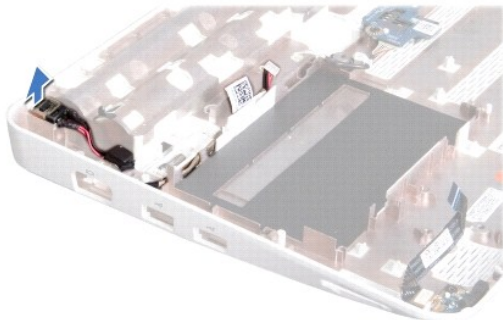
### Removing the AC Adapter Connector

1. Follow the procedures in [Before You Begin](#).
2. Remove the battery (see [Removing the Battery](#)).
3. Follow the instructions from [step 2](#) to [step 17](#) in [Removing the System Board](#).
4. Remove the left support bracket (see [Removing the Left Support Bracket](#)).
5. Remove the I/O board (see [Removing the I/O Board](#)).
6. Make a note of the AC adapter connector cable routing and remove the cable from the routing guide.




1	AC adapter connector
---	----------------------

7. Lift the AC adapter connector out of the computer base.



## Replacing the AC Adapter Connector

1. Follow the procedures in [Before You Begin](#).
2. Place the AC adapter connector in the computer base.
3. Route the AC adapter connector cable through the routing guide.
4. Replace the I/O board (see [Replacing the I/O Board](#)).
5. Replace the left support bracket (see [Replacing the Left Support Bracket](#)).
6. Follow the instructions from [step 4](#) to [step 21](#) in [Replacing the System Board](#).
7. Replace the battery (see [Replacing the Battery](#)).

 **CAUTION:** Before turning on the computer, replace all screws and ensure that no stray screws remain inside the computer. Failure to do so may result in damage to the computer.

---

[Back to Contents Page](#)

[Back to Contents Page](#)

## Display

### Dell™ Inspiron™ 1012 Service Manual

- [Display Assembly](#)
- [Display Bezel](#)
- [Display Panel](#)
- [Display Cable](#)
- [Display Panel Bracket](#)

- WARNING:** Before working inside your computer, read the safety information that shipped with your computer. For additional safety best practices information, see the Regulatory Compliance Homepage at [www.dell.com/regulatory\\_compliance](http://www.dell.com/regulatory_compliance).
- CAUTION:** To avoid electrostatic discharge, ground yourself by using a wrist grounding strap or by periodically touching an unpainted metal surface (such as a connector on your computer).
- CAUTION:** Only a certified service technician should perform repairs on your computer. Damage due to servicing that is not authorized by Dell™ is not covered by your warranty.
- CAUTION:** To help prevent damage to the system board, remove the main battery (see [Removing the Battery](#)) before working inside the computer.
- 

## Display Assembly

### Removing the Display Assembly

1. Follow the procedures in [Before You Begin](#).
2. Remove the battery (see [Removing the Battery](#)).
3. Remove the keyboard (see [Removing the Keyboard](#)).
4. Remove the hard-drive assembly (see [Removing the Hard-Drive Assembly](#)).
5. Remove the palm rest assembly (see [Removing the Palm Rest Assembly](#)).
6. Remove the hinge cover (see [Removing the Hinge Cover](#)).
7. Remove the screw that secures the display assembly to the computer base.

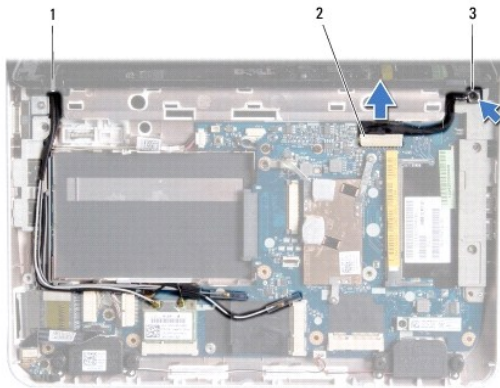


1	screw
---	-------

8. Open the display.

 **NOTE:** Ensure that you take adequate care while opening the display.

9. Note the routing of the Mini-Card antenna cables and remove them from the routing guides on the computer.
10. Disconnect the antenna cables from the Mini-Card.
11. Disconnect the display cable from the connector on the system board.
12. Remove the display cable grounding screw.



1	Mini-Card cable routing	2	display cable connector
3	display cable grounding screw		

13. Remove the screw that secures the display assembly to the computer base.



1	screw
---	-------

14. Lift the display assembly off the computer.

## Replacing the Display Assembly



1. Follow the procedures in [Before You Begin](#).
2. Place the display assembly in position and replace the screw that secures the display assembly to the computer base.
3. Replace the display cable grounding screw.
4. Route the Mini-Card antenna cables through the routing guides on the computer base.
5. Connect the display cable to the connector on the system board.
6. Connect the antenna cables to the Mini-Card (see [Replacing the Mini-Card\(s\)](#)).
7. Replace the screw that secures the display assembly to the computer base.
8. Replace the hinge cover (see [Replacing the Hinge Cover](#)).
9. Replace the palm rest assembly (see [Replacing the Palm Rest Assembly](#)).
10. Replace the hard-drive assembly (see [Replacing the Hard-Drive Assembly](#)).
11. Replace the keyboard (see [Replacing the Keyboard](#)).
12. Replace the battery (see [Replacing the Battery](#)).

**CAUTION:** Before turning on the computer, replace all screws and ensure that no stray screws remain inside the computer. Failure to do so may result in damage to the computer.

## Display Bezel

### Removing the Display Bezel

**CAUTION:** The display bezel is extremely fragile. Be careful when removing it to prevent damaging the bezel.

1. Follow the procedures in [Before You Begin](#).
2. Remove the display assembly (see [Removing the Display Assembly](#)).
3. Remove the two rubber pads that cover the screws that secure the display bezel to the display cover.
4. Remove the two screws that secure the display bezel to the display assembly.
5. Using your fingertips, carefully pry up the inside edge of the display bezel.



1	screws (2)	2	rubber pads (2)
3	display bezel		

6. Remove the display bezel.

## Replacing the Display Bezel

1. Follow the procedures in [Before You Begin](#).
2. Align the display bezel over the display panel, and gently snap into place.
3. Replace the two screws that secure the display bezel to the display cover.
4. Replace the two rubber pads to cover the screws that secure the display bezel to the display cover.
5. Replace the display assembly (see [Replacing the Display Assembly](#)).

**CAUTION:** Before turning on the computer, replace all screws and ensure that no stray screws remain inside the computer. Failure to do so may result in damage to the computer.

---

## Display Panel

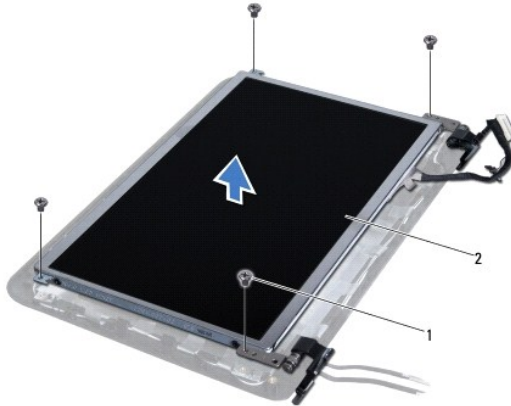
### Removing the Display Panel

1. Follow the procedures in [Before You Begin](#).
2. Remove the display assembly (see [Removing the Display Assembly](#)).
3. Remove the display bezel (see [Removing the Display Bezel](#)).
4. Disconnect the camera cable from the connector on the camera module.



1	camera cable connector
---	------------------------

5. Remove the four screws that secure the display panel to the display cover.
6. Lift the display panel off the display cover.



1	screws (4)	2	display panel
---	------------	---	---------------

## Replacing the Display Panel

1. Follow the procedures in [Before You Begin](#).
2. Align the display panel with the display cover.
3. Connect the camera cable to the connector on the camera module.
4. Replace the four screws that secure the display panel to the display cover.
5. Replace the display bezel (see [Replacing the Display Bezel](#)).
6. Replace the display assembly (see [Replacing the Display Assembly](#)).

**CAUTION:** Before turning on the computer, replace all screws and ensure that no stray screws remain inside the computer. Failure to do so may result in damage to the computer.

---

## Display Cable

### Removing the Display Cable

1. Follow the procedures in [Before You Begin](#).
2. Remove the display assembly (see [Removing the Display Assembly](#)).
3. Remove the display bezel (see [Removing the Display Bezel](#)).
4. Remove the display panel (see [Removing the Display Panel](#)).
5. Turn the display panel over and place it on a clean surface.
6. Pull the pull-tab as shown in the illustration to disconnect the display cable from the connector on the display panel.



1	display cable
---	---------------

7. Gently peel off the display cable from the display panel.

## Replacing the Display Cable

1. Follow the procedures in [Before You Begin](#).
2. Adhere the display cable along the edge of the display panel and connect the display cable to the connector on the display panel.
3. Replace the tape that secures the display cable to the display panel.
4. Turn the display panel over and place it on the display cover.
5. Replace the display panel (see [Replacing the Display Panel](#)).
6. Replace the display bezel (see [Replacing the Display Bezel](#)).
7. Replace the display assembly ([Replacing the Display Assembly](#)).

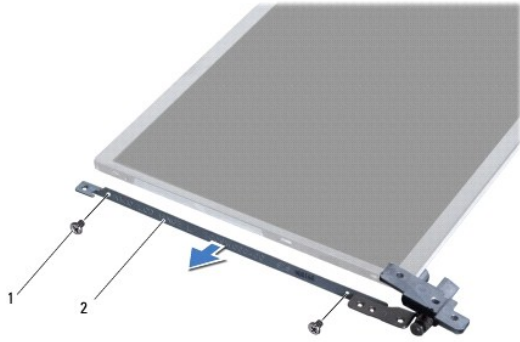
**CAUTION:** Before turning on the computer, replace all screws and ensure that no stray screws remain inside the computer. Failure to do so may result in damage to the computer.

---

## Display Panel Bracket

### Removing the Display Panel Bracket

1. Follow the procedures in [Before You Begin](#).
2. Remove the display assembly (see [Removing the Display Assembly](#)).
3. Remove the display bezel (see [Removing the Display Bezel](#)).
4. Remove the display panel (see [Removing the Display Panel](#)).
5. Remove the four screws (two on each side) that secure the display panel brackets to the display panel.
6. Remove the display panel brackets off the display panel.



1	screws (4)	2	display panel brackets (2)
---	------------	---	----------------------------

## Replacing the Display Panel Bracket

1. Follow the procedures in [Before You Begin](#).
2. Place the display panel brackets in position.
3. Replace the four screws (two on each side) that secure the display panel brackets to the display panel.
4. Replace the display panel (see [Replacing the Display Panel](#)).
5. Replace the display bezel (see [Replacing the Display Bezel](#)).
6. Replace the display assembly (see [Replacing the Display Assembly](#)).

**CAUTION:** Before turning on the computer, replace all screws and ensure that no stray screws remain inside the computer. Failure to do so may result in damage to the computer.

---

[Back to Contents Page](#)

## Hard-Drive Assembly

### Dell™ Inspiron™ 1012 Service Manual

- [Removing the Hard-Drive Assembly](#)
- [Replacing the Hard-Drive Assembly](#)

**⚠ WARNING:** Before working inside your computer, read the safety information that shipped with your computer. For additional safety best practices information, see the Regulatory Compliance Homepage at [www.dell.com/regulatory\\_compliance](http://www.dell.com/regulatory_compliance).

**⚠ WARNING:** If you remove the hard drive from the computer when the drive is hot, do not touch the metal housing of the hard drive.

**⚠ CAUTION:** To avoid electrostatic discharge, ground yourself by using a wrist grounding strap or by periodically touching an unpainted metal surface (such as a connector on your computer).

**⚠ CAUTION:** To help prevent damage to the system board, remove the main battery (see [Removing the Battery](#)) before working inside the computer.

**⚠ CAUTION:** To prevent data loss, turn off your computer (see [Turning Off Your Computer](#)) before removing the hard-drive assembly. Do not remove the hard drive while the computer is On or in Sleep state.

**⚠ CAUTION:** Hard drives are extremely fragile. Exercise care when handling the hard drive.

**⚠ CAUTION:** Only a certified service technician should perform repairs on your computer. Damage due to servicing that is not authorized by Dell™ is not covered by your warranty.

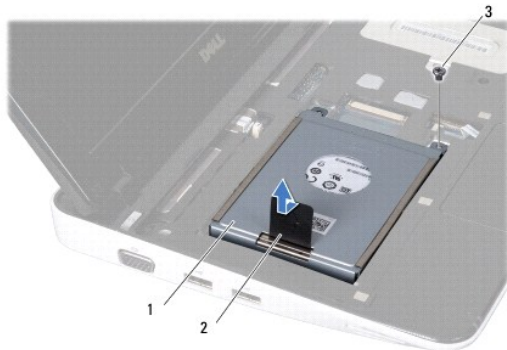
**⚠ CAUTION:** When you disconnect a cable, pull on its connector or on its pull-tab, not on the cable itself. Some cables have connectors with locking tabs; if you are disconnecting this type of cable, press in on the locking tabs before you disconnect the cable. As you pull connectors apart, keep them evenly aligned to avoid bending any connector pins. Also, before you connect a cable, ensure that both connectors are correctly oriented and aligned.

**🔧 NOTE:** Dell does not guarantee compatibility or provide support for hard drives from sources other than Dell.

**🔧 NOTE:** If you are installing a hard drive from a source other than Dell, you need to install an operating system, drivers, and utilities on the new hard drive (see the *Dell Technology Guide*).

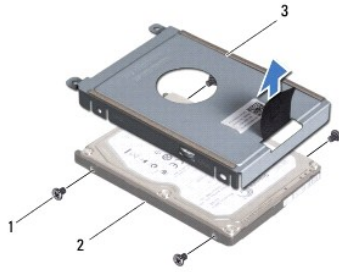
## Removing the Hard-Drive Assembly

1. Follow the procedures in [Before You Begin](#).
2. Remove the battery (see [Removing the Battery](#)).
3. Remove the keyboard (see [Removing the Keyboard](#)).
4. Remove the screw that secures the hard-drive assembly to the computer base.
5. Using the pull-tab, slide the hard-drive assembly towards the left to disconnect the hard-drive assembly from the connector on the system board.
6. Lift the hard-drive assembly out of the computer base.



1	hard-drive assembly	2	pull-tab
3	screw		

7. Remove the four screws that secure the hard drive to the hard-drive bracket.
8. Lift the hard-drive bracket away from the hard drive.



1	screws (4)	2	hard drive
3	hard-drive bracket		

**CAUTION:** When the hard drive is not in the computer, store it in protective antistatic packaging (see "Protecting Against Electrostatic Discharge" in the safety instructions that shipped with your computer).

---

## Replacing the Hard-Drive Assembly

1. Follow the procedures in [Before You Begin](#).
2. Remove the new drive from its packaging.  
Save the original packaging for storing or shipping the hard drive.
3. Place the hard drive in the hard-drive bracket.
4. Replace the four screws that secure the hard drive to the hard-drive bracket.
5. Place the hard-drive assembly in the computer base.
6. Use the pull-tab to push the hard drive assembly and connect it to the connector on the system board.
7. Replace the screw that secures the hard-drive assembly to the computer base.
8. Replace the keyboard (see [Replacing the Keyboard](#)).
9. Replace the battery (see [Replacing the Battery](#)).

**CAUTION:** Before turning on the computer, replace all screws and ensure that no stray screws remain inside the computer. Failure to do so may result in damage to the computer.

10. Install the operating system for your computer, as needed (see "Restoring Your Operating System" in the *Setup Guide*).
11. Install the drivers and utilities for your computer, as needed. For more information, see the *Dell Technology Guide*.

---

[Back to Contents Page](#)

[Back to Contents Page](#)

## Hinge Cover

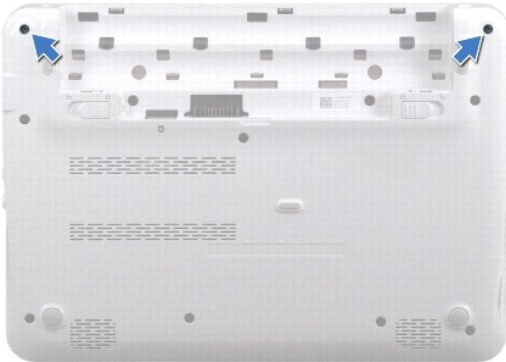
### Dell™ Inspiron™ 1012 Service Manual

- [Removing the Hinge Cover](#)
- [Replacing the Hinge Cover](#)

- WARNING:** Before working inside your computer, read the safety information that shipped with your computer. For additional safety best practices information, see the Regulatory Compliance Homepage at [www.dell.com/regulatory\\_compliance](http://www.dell.com/regulatory_compliance).
- CAUTION:** To avoid electrostatic discharge, ground yourself by using a wrist grounding strap or by periodically touching an unpainted metal surface (such as a connector on your computer).
- CAUTION:** Only a certified service technician should perform repairs on your computer. Damage due to servicing that is not authorized by Dell™ is not covered by your warranty.
- CAUTION:** To help prevent damage to the system board, remove the main battery (see [Removing the Battery](#)) before working inside the computer.
- 

## Removing the Hinge Cover

1. Follow the procedures in [Before You Begin](#).
2. Remove the battery (see [Removing the Battery](#)).
3. Remove the two screws that secure the hinge cover to the computer base.



4. Use a plastic scribe to gently pry the hinge cover up.
5. Rotate to disengage the hinge cover tabs from the computer base.




1	plastic scribe	2	hinge cover
---	----------------	---	-------------



6. Lift the hinge cover off the computer.
- 

## Replacing the Hinge Cover

1. Follow the procedures in [Before You Begin](#).
2. Align the tabs on the hinge cover with the slots on the computer base and snap the cover in place.
3. Turn over the computer and replace the two screws that secure the hinge cover to the computer base.
4. Replace the battery (see [Replacing the Battery](#)).

 **CAUTION:** Before turning on the computer, replace all screws and ensure that no stray screws remain inside the computer. Failure to do so may result in damage to the computer.

---

[Back to Contents Page](#)

[Back to Contents Page](#)

## I/O Board

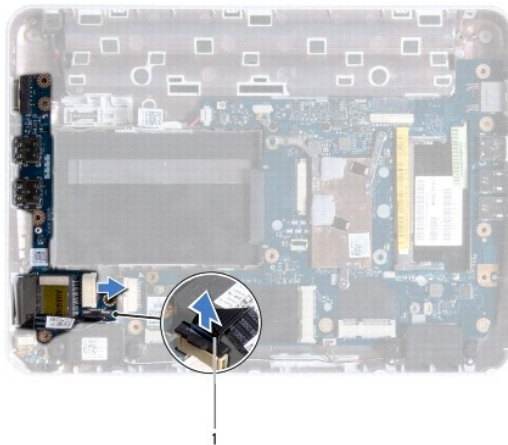
### Dell™ Inspiron™ 1012 Service Manual

- [Removing the I/O Board](#)
- [Replacing the I/O Board](#)

- WARNING:** Before working inside your computer, read the safety information that shipped with your computer. For additional safety best practices information, see the Regulatory Compliance Homepage at [www.dell.com/regulatory\\_compliance](http://www.dell.com/regulatory_compliance).
- CAUTION:** To avoid electrostatic discharge, ground yourself by using a wrist grounding strap or by periodically touching an unpainted metal surface (such as a connector on your computer).
- CAUTION:** Only a certified service technician should perform repairs on your computer. Damage due to servicing that is not authorized by Dell™ is not covered by your warranty.
- CAUTION:** To help prevent damage to the system board, remove the main battery (see [Removing the Battery](#)) before working inside the computer.
- 

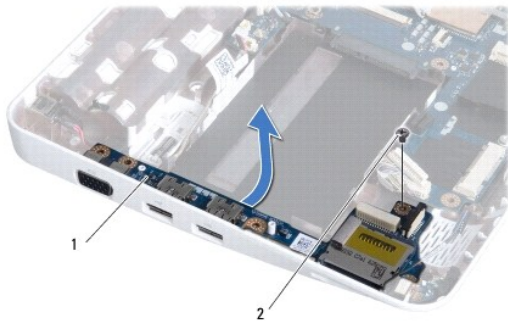
## Removing the I/O Board

1. Follow the procedures in [Before You Begin](#).
2. Remove the battery (see [Removing the Battery](#)).
3. Remove the keyboard (see [Removing the Keyboard](#)).
4. Remove the hard-drive assembly (see [Removing the Hard-Drive Assembly](#)).
5. Remove the palm rest assembly (see [Removing the Palm Rest Assembly](#)).
6. Remove the hinge cover (see [Removing the Hinge Cover](#)).
7. Remove the display assembly (see [Removing the Display Assembly](#)).
8. Remove the left support bracket (see [Removing the Left Support Bracket](#)).
9. Remove the speakers (see [Removing the Speakers](#)).
10. Press and eject any installed card or blank from the 3-in-1 Media Card Reader.
11. Lift the locking tab and pull the pull-tab on the status light board cable and disconnect the cable from the connector on the I/O board.
12. Disconnect the I/O board cable from the connector on the I/O board.



1	status light board cable
---	--------------------------

13. Remove the screw that secures the I/O board to the computer base.



1	I/O board	2	screw
---	-----------	---	-------

14. Lift the I/O board and ease the connectors on the I/O board out of the computer base.
- 

## Replacing the I/O Board

1. Follow the procedures in [Before You Begin](#).
2. Align the connectors on the I/O board with the slots on the computer base.
3. Replace the screw that secures the I/O board to the computer base.
4. Connect the I/O board cable to the connector on the I/O board.
5. Connect the status light board cable to the connector on the I/O board and press down on the locking tab to secure the status light board cable.
6. Replace any installed card or blank that you removed from the 3-in-1 Media Card Reader.
7. Replace the speakers (see [Replacing the Speakers](#)).
8. Replace the left support bracket (see [Replacing the Left Support Bracket](#)).
9. Replace the display assembly (see [Replacing the Display Assembly](#)).
10. Replace the hinge cover (see [Replacing the Hinge Cover](#)).
11. Replace the palm rest assembly (see [Replacing the Palm Rest Assembly](#)).
12. Replace the hard-drive assembly (see [Replacing the Hard-Drive Assembly](#)).
13. Replace the keyboard (see [Replacing the Keyboard](#)).
14. Replace the battery (see [Replacing the Battery](#)).

**CAUTION:** Before turning on the computer, replace all screws and ensure that no stray screws remain inside the computer. Failure to do so may result in damage to the computer.

---

[Back to Contents Page](#)

## Keyboard

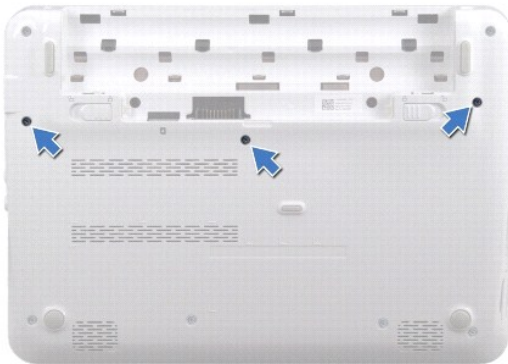
### Dell™ Inspiron™ 1012 Service Manual

- [Removing the Keyboard](#)
- [Replacing the Keyboard](#)

- WARNING:** Before working inside your computer, read the safety information that shipped with your computer. For additional safety best practices information, see the Regulatory Compliance Homepage at [www.dell.com/regulatory\\_compliance](http://www.dell.com/regulatory_compliance).
- CAUTION:** To avoid electrostatic discharge, ground yourself by using a wrist grounding strap or by periodically touching an unpainted metal surface (such as a connector on your computer).
- CAUTION:** Only a certified service technician should perform repairs on your computer. Damage due to servicing that is not authorized by Dell™ is not covered by your warranty.
- CAUTION:** To help prevent damage to the system board, remove the main battery (see [Removing the Battery](#)) before working inside the computer.
- 

## Removing the Keyboard

1. Follow the procedures in [Before You Begin](#).
2. Remove the battery (see [Removing the Battery](#)).
3. Remove the three screws that secure the keyboard to the computer base.



4. Turn the computer over and open the display as far as possible.
5. Lift the keyboard and carefully disengage it from the tabs on the palm rest assembly.
6. Slide the tabs on the keyboard out of the slots on the palm rest assembly.

**CAUTION:** The keycaps on the keyboard are fragile, easily dislodged, and time-consuming to replace. Be careful when removing and handling the keyboard.

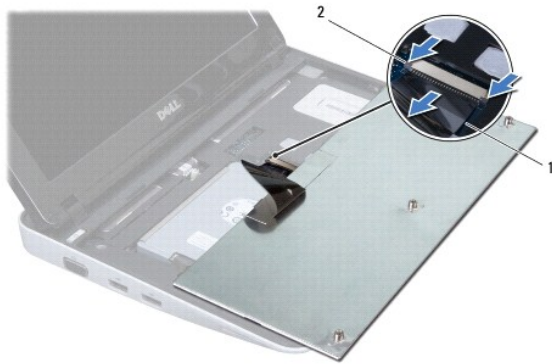
**CAUTION:** Be extremely careful when removing and handling the keyboard. Failure to do so could result in scratching the display panel.

7. Turn the keyboard over and place it over the palm rest assembly.



1	keyboard tabs (4)	2	keyboard
---	-------------------	---	----------

8. Release the keyboard cable connector latches and disconnect the keyboard cable from the system board connector.



1	keyboard cable	2	keyboard cable connector latches (2)
---	----------------	---	--------------------------------------

9. Lift the keyboard off the palm rest assembly.

## Replacing the Keyboard

1. Follow the procedures in [Before You Begin](#).
2. Slide the keyboard cable into the connector on the system board and press down on the keyboard cable connector latches to secure the keyboard cable.
3. Slide the tabs on the keyboard into the slots on the palm rest assembly and lower the keyboard into place.
4. Gently press around the edges of the keyboard to secure the keyboard under the tabs on the palm rest assembly.
5. Turn the computer over and replace the three screws that secure the keyboard to the computer base.
6. Replace the battery (see [Replacing the Battery](#)).

**CAUTION:** Before turning on the computer, replace all screws and ensure that no stray screws remain inside the computer. Failure to do so may result in damage to the computer.

[Back to Contents Page](#)

[Back to Contents Page](#)

## Status Light Board

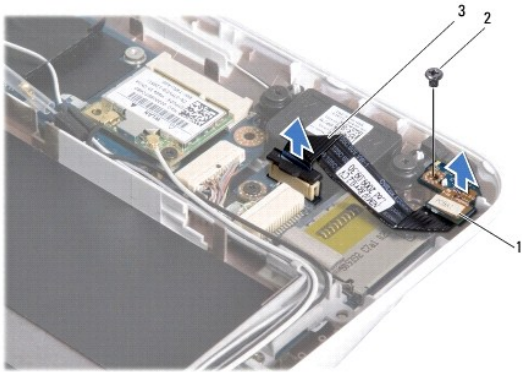
Dell™ Inspiron™ 1012 Service Manual

- [Removing the Status Light Board](#)
- [Replacing the Status Light Board](#)

- WARNING:** Before working inside your computer, read the safety information that shipped with your computer. For additional safety best practices information, see the Regulatory Compliance Homepage at [www.dell.com/regulatory\\_compliance](http://www.dell.com/regulatory_compliance).
- CAUTION:** To avoid electrostatic discharge, ground yourself by using a wrist grounding strap or by periodically touching an unpainted metal surface (such as a connector on your computer).
- CAUTION:** Only a certified service technician should perform repairs on your computer. Damage due to servicing that is not authorized by Dell™ is not covered by your warranty.
- CAUTION:** To help prevent damage to the system board, remove the main battery (see [Removing the Battery](#)) before working inside the computer.
- 

### Removing the Status Light Board

1. Follow the procedures in [Before You Begin](#).
2. Remove the battery (see [Removing the Battery](#)).
3. Remove the keyboard (see [Removing the Keyboard](#)).
4. Remove the hard-drive assembly (see [Removing the Hard-Drive Assembly](#)).
5. Remove the palm rest assembly (see [Removing the Palm Rest Assembly](#)).
6. Lift the locking tab on the status light board cable connector.
7. Use the pull tab to disconnect the status light board cable from the connector on the I/O board.
8. Remove the screw that secures the status light board to the computer base.
9. Lift the status light board off the computer base.




1	status light board	2	screw
3	status light board cable		

---

### Replacing the Status Light Board

1. Follow the procedures in [Before You Begin](#).
2. Align the screw hole and the notch on the status light board with the screw hole and the tab on the computer base respectively.

3. Replace the screw that secures the status light board to the computer base.
4. Connect the status light board cable to the connector on the I/O board and press down on the locking tab to secure the status light board cable.
5. Replace the palm rest assembly (see [Replacing the Palm Rest Assembly](#)).
6. Replace the hard-drive assembly (see [Replacing the Hard-Drive Assembly](#)).
7. Replace the keyboard (see [Replacing the Keyboard](#)).
8. Replace the battery (see [Replacing the Battery](#)).

 **CAUTION:** Before turning on the computer, replace all screws and ensure that no stray screws remain inside the computer. Failure to do so may result in damage to the computer.

---

[Back to Contents Page](#)

[Back to Contents Page](#)

## Memory Module

Dell™ Inspiron™ 1012 Service Manual

- [Removing the Memory Module](#)
- [Replacing the Memory Module](#)

- WARNING:** Before working inside your computer, read the safety information that shipped with your computer. For additional safety best practices information, see the Regulatory Compliance Homepage at [www.dell.com/regulatory\\_compliance](http://www.dell.com/regulatory_compliance).
- CAUTION:** To avoid electrostatic discharge, ground yourself by using a wrist grounding strap or by periodically touching an unpainted metal surface (such as a connector on your computer).
- CAUTION:** Only a certified service technician should perform repairs on your computer. Damage due to servicing that is not authorized by Dell™ is not covered by your warranty.
- CAUTION:** To help prevent damage to the system board, remove the main battery (see [Removing the Battery](#)) before working inside the computer.

You can increase your computer memory by installing memory modules on the system board. See "Basic Specifications" in your *Setup Guide* or the *Comprehensive Specifications* at [support.dell.com/manuals](http://support.dell.com/manuals) for information on the type of memory supported by your computer.

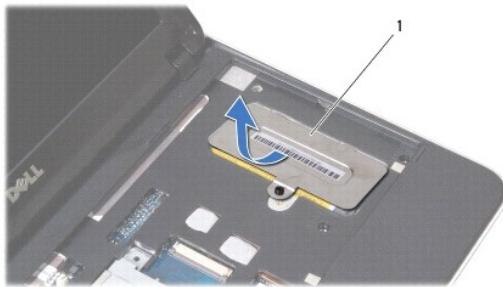
**NOTE:** Memory modules purchased from Dell are covered under your computer warranty.

Your computer has one user-accessible SODIMM connector.

---

## Removing the Memory Module

1. Follow the procedures in [Before You Begin](#).
2. Remove the battery (see [Removing the Battery](#)).
3. Remove the keyboard (see [Removing the Keyboard](#)).
4. Loosen the screw that secures the memory module cover to the palm rest assembly.



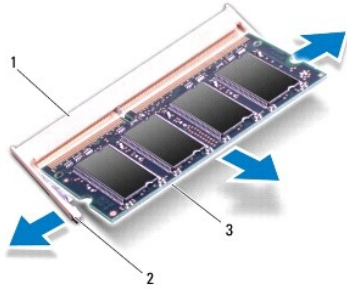
1	memory module cover
---	---------------------

5. Slide the memory module cover tabs out of the slots on the palm rest assembly.
6. Lift the memory module cover off the palm rest assembly.

**CAUTION:** To prevent damage to the memory module connector, do not use tools to spread the memory module securing clips.

7. Use your fingertips to carefully spread apart the securing clips on each end of the memory module connector until the memory module pops up.






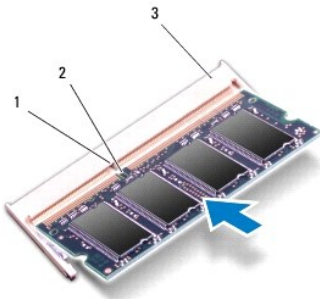
1	memory module connector	2	securing clips (2)
3	memory module		

8. Remove the memory module from the memory module connector.

## Replacing the Memory Module

1. Align the notch in the memory module with the tab in the memory module connector.
2. Slide the memory module firmly into the slot at a 45-degree angle, and press the memory module down until it clicks into place. If you do not hear the click, remove the memory module and reinstall it.

 **NOTE:** If the memory module is not installed properly, the computer may not boot.



1	tab	2	notch
3	memory module connector		

3. Slide the tabs on the memory module cover into the slots on the palm rest assembly.
4. Tighten the screw that secures the memory module cover to the palm rest assembly.
5. Replace the keyboard (see [Replacing the Keyboard](#)).
6. Replace the battery (see [Replacing the Battery](#)).
7. Turn on the computer.

As the computer boots, it detects the additional memory and automatically updates the system configuration information.

To confirm the amount of memory installed in the computer:

*In Microsoft® Windows® XP*

Click **Start**→ **All Programs**→ **Accessories**→ **System Tools**→ **Dell System Information**.

*In Microsoft Windows 7*

Click **Start**  → **Help and Support** → **Dell System Information**.

 **CAUTION:** Before turning on the computer, replace all screws and ensure that no stray screws remain inside the computer. Failure to do so may result in damage to the computer.

---

[Back to Contents Page](#)

## Wireless Mini-Card(s)

### Dell™ Inspiron™ 1012 Service Manual

- [Removing the Mini-Card\(s\)](#)
- [Replacing the Mini-Card\(s\)](#)

- WARNING:** Before working inside your computer, read the safety information that shipped with your computer. For additional safety best practices information, see the Regulatory Compliance Homepage at [www.dell.com/regulatory\\_compliance](http://www.dell.com/regulatory_compliance).
- CAUTION:** To avoid electrostatic discharge, ground yourself by using a wrist grounding strap or by periodically touching an unpainted metal surface (such as a connector on your computer).
- CAUTION:** Only a certified service technician should perform repairs on your computer. Damage due to servicing that is not authorized by Dell™ is not covered by your warranty.
- CAUTION:** To help prevent damage to the system board, remove the main battery (see [Removing the Battery](#)) before working inside the computer.
- NOTE:** Dell does not guarantee compatibility or provide support for Mini-Cards from sources other than Dell.

If you ordered a wireless Mini-Card with your computer, the card is already installed.

Your computer supports two Mini-Card slots:

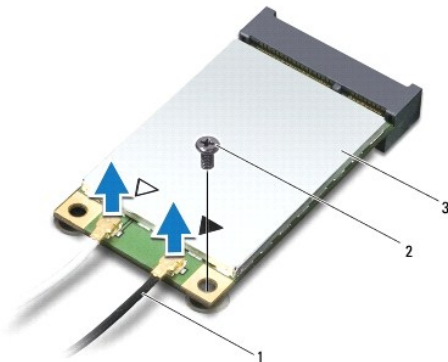
- 1 One Full Mini-Card slot – for WWAN
- 1 One Half Mini-Card slot – for WLAN

**NOTE:** Depending on the configuration of the computer when it was sold, the Mini-Card slot may or may not have a Mini-Card installed.

---

## Removing the Mini-Card(s)

1. Follow the procedures in [Before You Begin](#).
2. Remove the battery (see [Removing the Battery](#)).
3. Remove the keyboard (see [Removing the Keyboard](#)).
4. Remove the hard-drive assembly (see [Removing the Hard-Drive Assembly](#)).
5. Remove the palm rest assembly (see [Removing the Palm Rest Assembly](#)).
6. Disconnect the antenna cables from the Mini-Card.



1	antenna cables (2)	2	screw
3	Mini-Card		

7. Remove the screw that secures the Mini-Card to the system board.
8. Lift the Mini-Card out of the connector on the system board.



**CAUTION:** When the Mini-Card is not in the computer, store it in protective antistatic packaging. For more information, see "Protecting Against Electrostatic Discharge" in the safety information that shipped with your computer.

## Replacing the Mini-Card(s)

1. Follow the procedures in [Before You Begin](#).
2. Remove the new Mini-Card from its packaging.

**CAUTION:** Use firm and even pressure to slide the card into place. If you use excessive force, you may damage the connector.

**CAUTION:** The connectors are keyed to ensure correct insertion. If you feel resistance, check the connectors on the card and on the system board, and realign the card.

3. Insert the Mini-Card connector at a 45-degree angle into the connector on the system board.
4. Press the other end of the Mini-Card down into the slot on the system board and replace the screw that secures the Mini-Card to the system board.
5. Connect the appropriate antenna cables to the Mini-Card you are installing. The following table provides the antenna cable color scheme for each Mini-Card supported by your computer.

Connectors on the Mini-Card	Antenna Cable Color Scheme
<b>WWAN (2 antenna cables)</b>	
Main WWAN (white triangle)	white with gray stripe
Auxiliary WWAN (black triangle)	black with gray stripe
<b>WLAN (2 antenna cables)</b>	
Main WLAN (white triangle)	white
Auxiliary WLAN (black triangle)	black

6. Replace the palm rest assembly (see [Replacing the Palm Rest Assembly](#)).
7. Replace the hard-drive assembly (see [Replacing the Hard-Drive Assembly](#)).
8. Replace the keyboard (see [Replacing the Keyboard](#)).
9. Replace the battery (see [Replacing the Battery](#)).

**CAUTION:** Before turning on the computer, replace all screws and ensure that no stray screws remain inside the computer. Failure to do so may result in damage to the computer.

10. Install the drivers and utilities for your computer, as required. For more information, see the *Dell Technology Guide*.

**NOTE:** If you are installing a communication card from a source other than Dell, you must install the appropriate drivers and utilities. For more generic driver information, see the *Dell Technology Guide*.

[Back to Contents Page](#)

[Back to Contents Page](#)

## Palm Rest Assembly

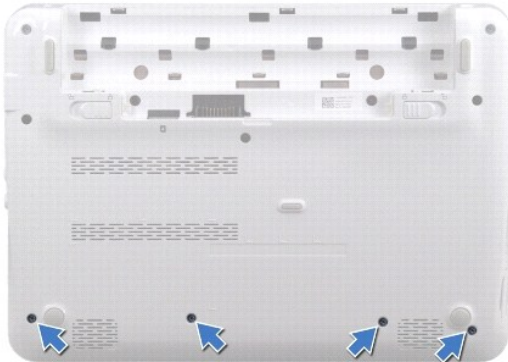
Dell™ Inspiron™ 1012 Service Manual

- [Removing the Palm Rest Assembly](#)
- [Replacing the Palm Rest Assembly](#)

- WARNING:** Before working inside your computer, read the safety information that shipped with your computer. For additional safety best practices information, see the Regulatory Compliance Homepage at [www.dell.com/regulatory\\_compliance](http://www.dell.com/regulatory_compliance).
- CAUTION:** To avoid electrostatic discharge, ground yourself by using a wrist grounding strap or by periodically touching an unpainted metal surface (such as a connector on your computer).
- CAUTION:** Only a certified service technician should perform repairs on your computer. Damage due to servicing that is not authorized by Dell™ is not covered by your warranty.
- CAUTION:** To help prevent damage to the system board, remove the main battery (see [Removing the Battery](#)) before working inside the computer.
- 

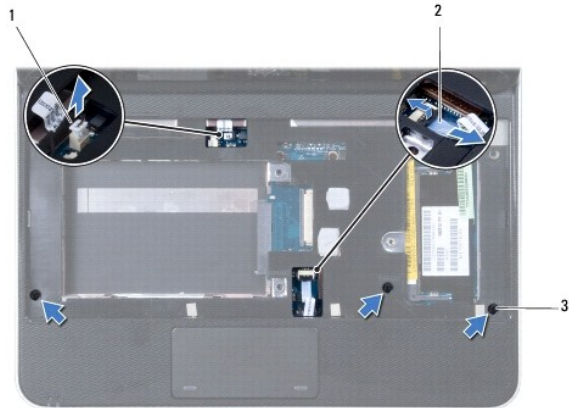
### Removing the Palm Rest Assembly

1. Follow the procedures in [Before You Begin](#).
2. Remove the battery (see [Removing the Battery](#)).
3. Remove the four screws that secure the palm rest assembly to the computer base.



4. Turn the computer over and open the display as far as possible.
  5. Remove the keyboard (see [Removing the Keyboard](#)).
  6. Remove the hard-drive assembly (see [Removing the Hard-Drive Assembly](#)).
- CAUTION:** Pull the pull-tabs on top of the connectors to avoid damage to the connectors.

7. Disconnect the power button cable from the connector on the system board.
8. Lift the locking tab and pull the pull-tab to disconnect the touch pad cable from the connector on the system board.
9. Remove the three screws that secure the palm rest assembly to the computer base.



1	power button cable connector	2	touch pad cable
3	screws (3)		

**CAUTION:** Carefully separate the palm rest assembly from the computer base to avoid damage to the palm rest assembly.

10. Using a plastic scribe carefully pry out the palm rest assembly along the rear edge and then ease the palm rest assembly from the computer base.




1	palm rest assembly
---	--------------------

11. Lift the palm rest assembly off the computer base.

## Replacing the Palm Rest Assembly

1. Follow the procedures in [Before You Begin](#).
2. Align the palm rest assembly on the computer base and gently snap the palm rest assembly into place.
3. Slide the touch pad cable into the connector on the system board and, press down on the locking tab to secure the touch pad cable.
4. Connect the power button cable to the connector on the system board.
5. Replace the three screws that secure the palm rest assembly to the computer base.
6. Replace the hard-drive assembly (see [Replacing the Hard-Drive Assembly](#)).
7. Replace the keyboard (see [Replacing the Keyboard](#)).
8. Turn the computer over and replace the four screws that secure the palm rest assembly to the computer base.
9. Replace the battery (see [Replacing the Battery](#)).

 **CAUTION:** Before turning on the computer, replace all screws and ensure that no stray screws remain inside the computer. Failure to do so may result in damage to the computer.

---

[Back to Contents Page](#)



[Back to Contents Page](#)

## Power Button Board

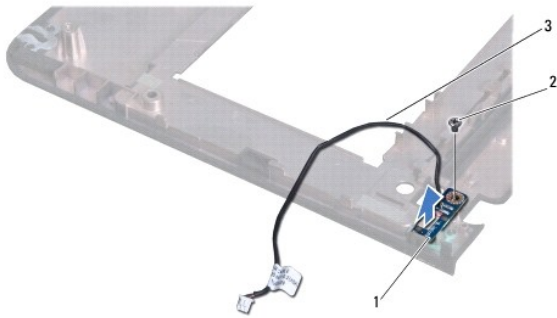
Dell™ Inspiron™ 1012 Service Manual

- [Removing the Power Button Board](#)
- [Replacing the Power Button Board](#)

- WARNING:** Before working inside your computer, read the safety information that shipped with your computer. For additional safety best practices information, see the Regulatory Compliance Homepage at [www.dell.com/regulatory\\_compliance](http://www.dell.com/regulatory_compliance).
- CAUTION:** To avoid electrostatic discharge, ground yourself by using a wrist grounding strap or by periodically touching an unpainted metal surface (such as a connector on your computer).
- CAUTION:** Only a certified service technician should perform repairs on your computer. Damage due to servicing that is not authorized by Dell™ is not covered by your warranty.
- CAUTION:** To help prevent damage to the system board, remove the main battery (see [Removing the Battery](#)) before working inside the computer.
- 

### Removing the Power Button Board

1. Follow the procedures in [Before You Begin](#).
2. Remove the battery (see [Removing the Battery](#)).
3. Remove the keyboard (see [Removing the Keyboard](#)).
4. Remove the hard-drive assembly (see [Removing the Hard-Drive Assembly](#)).
5. Remove the palm rest assembly (see [Removing the Palm Rest Assembly](#)).
6. Note the routing of the power button cable and remove the cable from the routing guide on the palm rest assembly.
7. Turn the palm rest assembly over and remove the screw that secures the power button board to the palm rest assembly.




1	power button board	2	screw
3	power button cable		

8. Lift the power button board off the palm rest assembly.
- 

### Replacing the Power Button Board

1. Follow the procedures in [Before You Begin](#).
2. Place the power button board on the palm rest assembly and replace the screw that secures the power button board to the palm rest assembly.
3. Route the power button cable through the routing guide on the palm rest assembly.
4. Turn and replace the palm rest assembly (see [Replacing the Palm Rest Assembly](#)).

5. Replace the hard-drive assembly (see [Replacing the Hard-Drive Assembly](#)).
6. Replace the keyboard (see [Replacing the Keyboard](#)).
7. Replace the battery (see [Replacing the Battery](#)).

 **CAUTION:** Before turning on the computer, replace all screws and ensure that no stray screws remain inside the computer. Failure to do so may result in damage to the computer.

---

[Back to Contents Page](#)

## SIM Card Board

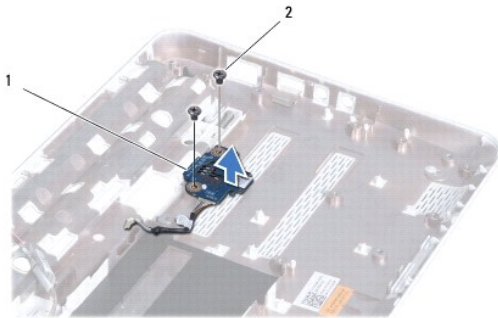
### Dell™ Inspiron™ 1012 Service Manual

- [Removing the SIM Card Board](#)
- [Replacing the SIM Card Board](#)

- WARNING:** Before working inside your computer, read the safety information that shipped with your computer. For additional safety best practices information, see the Regulatory Compliance Homepage at [www.dell.com/regulatory\\_compliance](http://www.dell.com/regulatory_compliance).
- CAUTION:** To avoid electrostatic discharge, ground yourself by using a wrist grounding strap or by periodically touching an unpainted metal surface (such as a connector on your computer).
- CAUTION:** Only a certified service technician should perform repairs on your computer. Damage due to servicing that is not authorized by Dell™ is not covered by your warranty.
- CAUTION:** To help prevent damage to the system board, remove the main battery (see [Removing the Battery](#)) before working inside the computer.
- 

## Removing the SIM Card Board

1. Follow the procedures in [Before You Begin](#).
2. Remove the battery (see [Removing the Battery](#)).
3. Follow the instructions from [step 2](#) to [step 17](#) in [Removing the System Board](#).
4. Remove the two screws that secure the SIM card board to the computer base.
5. Lift the SIM card board off the computer base.



1	SIM card board	2	screws (2)
---	----------------	---	------------

---

## Replacing the SIM Card Board

1. Follow the procedures in [Before You Begin](#).
2. Place the SIM card board in position and replace the two screws that secure the SIM card board to the computer base.
3. Follow the instructions from [step 4](#) to [step 21](#) in [Replacing the System Board](#).

- CAUTION:** Before turning on the computer, replace all screws and ensure that no stray screws remain inside the computer. Failure to do so may result in damage to the computer.
-

## Speakers

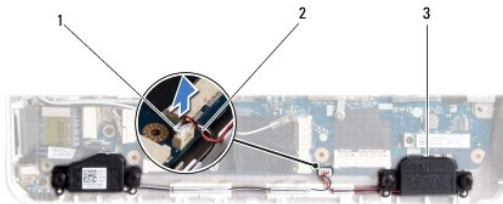
### Dell™ Inspiron™ 1012 Service Manual

- [Removing the Speakers](#)
- [Replacing the Speakers](#)

- WARNING:** Before working inside your computer, read the safety information that shipped with your computer. For additional safety best practices information, see the Regulatory Compliance Homepage at [www.dell.com/regulatory\\_compliance](http://www.dell.com/regulatory_compliance).
- CAUTION:** To avoid electrostatic discharge, ground yourself by using a wrist grounding strap or by periodically touching an unpainted metal surface (such as a connector on your computer).
- CAUTION:** Only a certified service technician should perform repairs on your computer. Damage due to servicing that is not authorized by Dell™ is not covered by your warranty.
- CAUTION:** To help prevent damage to the system board, remove the main battery (see [Removing the Battery](#)) before working inside the computer.
- 

## Removing the Speakers

1. Follow the procedures in [Before You Begin](#).
2. Remove the battery (see [Removing the Battery](#)).
3. Remove the keyboard (see [Removing the Keyboard](#)).
4. Remove the hard-drive assembly (see [Removing the Hard-Drive Assembly](#)).
5. Remove the palm rest assembly (see [Removing the Palm Rest Assembly](#)).
6. Disconnect the speaker cable from the connector on the system board.



1	speaker cable connector	2	speaker cable
3	speakers (2)		


7. Remove the four (two on each side) screws that secure the speakers to the computer base.
  8. Note the routing of the speaker cable and remove the speakers and cable from the computer base.
- 

## Replacing the Speakers

1. Follow the procedures in [Before You Begin](#).
2. Place the speakers on the computer base and route the speaker cables in the routing guides.
3. Replace the four (two on each side) screws that secure the speakers to the computer base.
4. Connect the speaker cable to the connector on the system board.
5. Replace the palm rest assembly (see [Replacing the Palm Rest Assembly](#)).
6. Replace the hard-drive assembly (see [Replacing the Hard-Drive Assembly](#)).

7. Replace the keyboard (see [Replacing the Keyboard](#)).

8. Replace the battery (see [Replacing the Battery](#)).

 **CAUTION:** Before turning on the computer, replace all screws and ensure that no stray screws remain inside the computer. Failure to do so may result in damage to the computer.

---

[Back to Contents Page](#)

## Support Bracket(s)

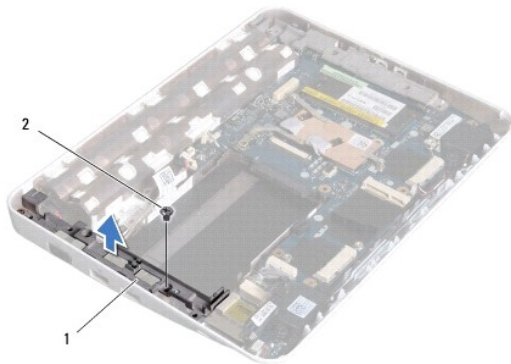
### Dell™ Inspiron™ 1012 Service Manual

- [Removing the Left Support Bracket](#)
- [Replacing the Left Support Bracket](#)
- [Removing the Right Support Bracket](#)
- [Replacing the Right Support Bracket](#)

- ⚠ WARNING:** Before working inside your computer, read the safety information that shipped with your computer. For additional safety best practices information, see the Regulatory Compliance Homepage at [www.dell.com/regulatory\\_compliance](http://www.dell.com/regulatory_compliance).
- ⚠ CAUTION:** To avoid electrostatic discharge, ground yourself by using a wrist grounding strap or by periodically touching an unpainted metal surface (such as a connector on your computer).
- ⚠ CAUTION:** Only a certified service technician should perform repairs on your computer. Damage due to servicing that is not authorized by Dell™ is not covered by your warranty.
- ⚠ CAUTION:** To help prevent damage to the system board, remove the main battery (see [Removing the Battery](#)) before working inside the computer.
- 

## Removing the Left Support Bracket

1. Follow the procedures in [Before You Begin](#).
2. Remove the battery (see [Removing the Battery](#)).
3. Remove the keyboard (see [Removing the Keyboard](#)).
4. Remove the hard-drive assembly (see [Removing the Hard-Drive Assembly](#)).
5. Remove the palm rest assembly (see [Removing the Palm Rest Assembly](#)).
6. Remove the hinge cover (see [Removing the Hinge Cover](#)).
7. Remove the display assembly (see [Removing the Display Assembly](#)).
8. Remove the screw that secures the left support bracket to the I/O board.



1	left support bracket	2	screw
---	----------------------	---	-------

9. Lift the left support bracket off the I/O board.
- 

## Replacing the Left Support Bracket

1. Follow the procedures in [Before You Begin](#).

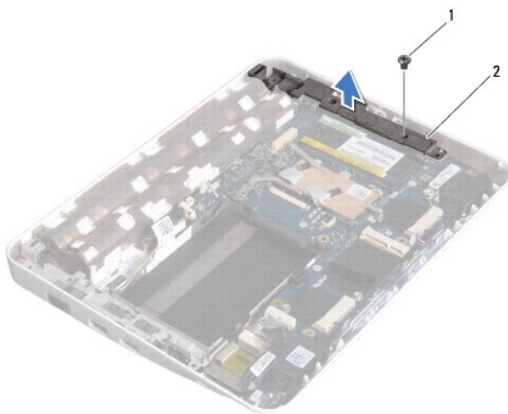
2. Align the slots on the left support bracket with the alignment posts on the computer base and place the bracket in position.
3. Replace the screw that secures the left support bracket to the computer base.
4. Replace the display assembly (see [Replacing the Display Assembly](#)).
5. Replace the hinge cover (see [Replacing the Hinge Cover](#)).
6. Replace the palm rest assembly (see [Replacing the Palm Rest Assembly](#)).
7. Replace the hard-drive assembly (see [Replacing the Hard-Drive Assembly](#)).
8. Replace the keyboard (see [Replacing the Keyboard](#)).
9. Replace the battery (see [Replacing the Battery](#)).

**CAUTION:** Before turning on the computer, replace all screws and ensure that no stray screws remain inside the computer. Failure to do so may result in damage to the computer.

---

## Removing the Right Support Bracket

1. Follow the procedures in [Before You Begin](#).
2. Remove the battery (see [Removing the Battery](#)).
3. Remove the keyboard (see [Removing the Keyboard](#)).
4. Remove the hard-drive assembly (see [Removing the Hard-Drive Assembly](#)).
5. Remove the palm rest assembly (see [Removing the Palm Rest Assembly](#)).
6. Remove the hinge cover (see [Removing the Hinge Cover](#)).
7. Remove the display assembly (see [Replacing the Display Assembly](#)).
8. Remove the screw that secures the right support bracket to the system board.
9. Lift the right support bracket off the system board.




1	screw	2	right support bracket
---	-------	---	-----------------------

---

## Replacing the Right Support Bracket

1. Follow the procedures in [Before You Begin](#).
2. Align the slots on the right support bracket with the alignment posts on the computer base and place the bracket in position.

3. Replace the screw that secures the right support bracket to the computer base.
4. Replace the display assembly (see [Replacing the Display Assembly](#)).
5. Replace the hinge cover (see [Replacing the Hinge Cover](#)).
6. Replace the palm rest assembly (see [Replacing the Palm Rest Assembly](#)).
7. Replace the hard-drive assembly (see [Replacing the Hard-Drive Assembly](#)).
8. Replace the keyboard (see [Replacing the Keyboard](#)).
9. Replace the battery (see [Replacing the Battery](#)).

 **CAUTION:** Before turning on the computer, replace all screws and ensure that no stray screws remain inside the computer. Failure to do so may result in damage to the computer.

---

[Back to Contents Page](#)








[Back to Contents Page](#)

## System Board

Dell™ Inspiron™ 1012 Service Manual

- [Removing the System Board](#)
- [Replacing the System Board](#)
- [Entering the Service Tag in the BIOS](#)

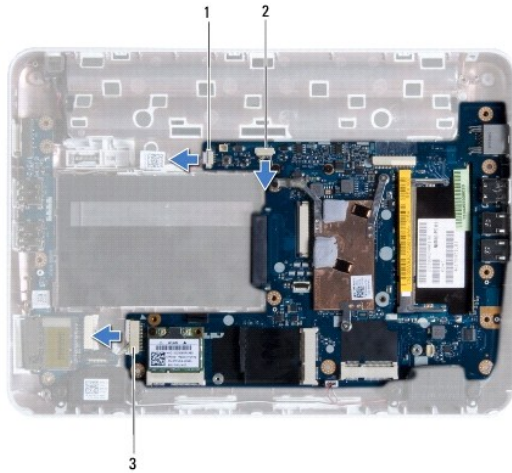
-  **WARNING:** Before working inside your computer, read the safety information that shipped with your computer. For additional safety best practices information, see the Regulatory Compliance Homepage at [www.dell.com/regulatory\\_compliance](http://www.dell.com/regulatory_compliance).
-  **CAUTION:** To avoid electrostatic discharge, ground yourself by using a wrist grounding strap or by periodically touching an unpainted metal surface (such as a connector on your computer).
-  **CAUTION:** Only a certified service technician should perform repairs on your computer. Damage due to servicing that is not authorized by Dell™ is not covered by your warranty.
-  **CAUTION:** To help prevent damage to the system board, remove the main battery (see [Removing the Battery](#)) before working inside the computer.
-  **CAUTION:** Handle components and cards by their edges, and avoid touching pins and contacts.

The system board's BIOS chip contains the Service Tag, which is also visible on a barcode label on the bottom of the computer. The replacement kit for the system board includes a CD that provides a utility for transferring the Service Tag to the replacement system board.

---

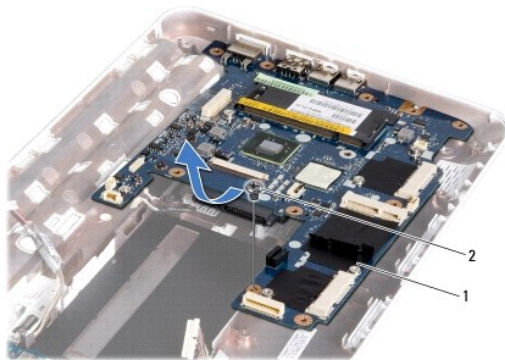
## Removing the System Board

1. Follow the procedures in [Before You Begin](#).
2. Remove any installed card or blank from the 3-in-1 Media Card reader slot.
3. Remove the battery (see [Removing the Battery](#)).
4. Remove the keyboard (see [Removing the Keyboard](#)).
5. Remove the hard-drive assembly (see [Removing the Hard-Drive Assembly](#)).
6. Remove the palm rest assembly (see [Removing the Palm Rest Assembly](#)).
7. Remove the Bluetooth™ card (see [Removing the Bluetooth Card](#)).
8. Remove the processor heat sink (see [Removing the Processor Heat Sink](#)).
9. Remove the Mini-Card(s) (see [Removing the Mini-Card\(s\)](#)).
10. Remove the video accelerator card (see [Removing the Video Accelerator Card](#)).
11. Remove the hinge cover (see [Removing the Hinge Cover](#)).
12. Remove the display assembly (see [Removing the Display Assembly](#)).
13. Remove the right support bracket (see [Removing the Right Support Bracket](#)).
14. Disconnect the AC adapter connector cable, SIM card board cable, and I/O board cable from their connectors on the system board.



1	AC adapter cable connector	2	SIM card board cable connector
3	I/O board cable connector		

15. Remove the speakers (see [Removing the Speakers](#)).
16. Remove the screw that secures the system board to the computer base.




1	system board	2	screw
---	--------------	---	-------

17. Carefully ease the connectors on the system board out of the slots in the computer, and lift the system board out of the computer base.
18. Turn the system board over.
19. Remove the coin-cell battery (see [Removing the Coin-Cell Battery](#)).

## Replacing the System Board

1. Follow the procedures in [Before You Begin](#).
2. Replace the coin-cell battery (see [Replacing the Coin-Cell Battery](#)).
3. Turn the system board over.
4. Align the connectors on the system board with the slots on the computer base and place it on the computer base.
5. Replace the screw that secures the system board to the computer base.
6. Replace the speakers (see [Replacing the Speakers](#)).

7. Connect the AC adapter connector cable, SIM card board cable, and I/O board cable to their connectors on the system board.
8. Replace the right support bracket (see [Replacing the Right Support Bracket](#)).
9. Replace the display assembly (see [Replacing the Display Assembly](#)).
10. Replace the hinge cover (see [Replacing the Hinge Cover](#)).
11. Replace the video accelerator card (see [Replacing the Video Accelerator Card](#)).
12. Replace the Mini-Card(s) (see [Replacing the Mini-Card\(s\)](#)).
13. Replace the processor heat sink (see [Replacing the Processor Heat Sink](#)).
14. Replace the Bluetooth card (see [Replacing the Bluetooth Card](#)).
15. Replace the palm rest assembly (see [Replacing the Palm Rest Assembly](#)).
16. Replace the hard-drive assembly (see [Replacing the Hard-Drive Assembly](#)).
17. Replace the keyboard (see [Replacing the Keyboard](#)).
18. Replace the battery (see [Replacing the Battery](#)).
19. Replace any cards removed from the 3-in-1 Media Cards reader slot.

 **CAUTION:** Before turning on the computer, replace all screws and ensure that no stray screws remain inside the computer. Failure to do so may result in damage to the computer.

20. Turn on the computer.

 **NOTE:** After you have replaced the system board, enter the computer Service Tag into the BIOS of the replacement system board.

21. Enter the service tag (see [Entering the Service Tag in the BIOS](#)).
- 


## Entering the Service Tag in the BIOS


1. Ensure that the AC adapter is plugged in and that the main battery is installed properly.
  2. Turn on the computer.
  3. Press <F2> during POST to enter the system setup program.
  4. Navigate to the security tab and enter the service tag in the **Set Service Tag** field.
- 


[Back to Contents Page](#)

[Back to Contents Page](#)

## **Dell™ Inspiron™ 1012 Service Manual**

 **NOTE:** A NOTE indicates important information that helps you make better use of your computer.

 **CAUTION:** A CAUTION indicates potential damage to hardware or loss of data if instructions are not followed.

 **WARNING:** A WARNING indicates a potential for property damage, personal injury, or death.

Information in this document is subject to change without notice.  
© 2010 Dell Inc. All rights reserved.

Reproduction of these materials in any manner whatsoever without the written permission of Dell Inc. is strictly forbidden.

Trademarks used in this text: *Dell*, the *DELL* logo, and *Inspiron* are trademarks of Dell Inc.; *Bluetooth* is a registered trademark owned by Bluetooth SIG, Inc. and is used by Dell under license; *Microsoft* and *Windows* are either trademarks or registered trademarks of Microsoft Corporation in the United States and/or other countries.

Other trademarks and trade names may be used in this document to refer to either the entities claiming the marks and names or their products. Dell Inc. disclaims any proprietary interest in trademarks and trade names other than its own.

January 2010 Rev. A00

---

[Back to Contents Page](#)

[Back to Contents Page](#)

## Touch Pad Module

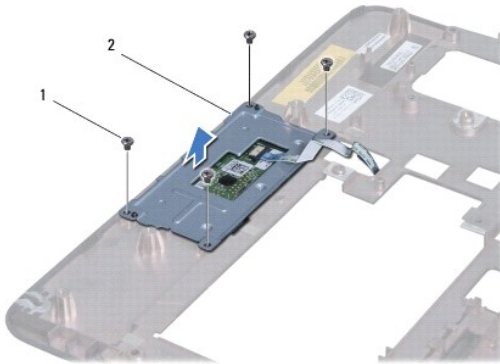
Dell™ Inspiron™ 1012 Service Manual

- [Removing the Touch Pad Module](#)
- [Replacing the Touch Pad Module](#)

- WARNING:** Before working inside your computer, read the safety information that shipped with your computer. For additional safety best practices information, see the Regulatory Compliance Homepage at [www.dell.com/regulatory\\_compliance](http://www.dell.com/regulatory_compliance).
- CAUTION:** To avoid electrostatic discharge, ground yourself by using a wrist grounding strap or by periodically touching an unpainted metal surface (such as a connector on your computer).
- CAUTION:** Only a certified service technician should perform repairs on your computer. Damage due to servicing that is not authorized by Dell™ is not covered by your warranty.
- CAUTION:** To help prevent damage to the system board, remove the main battery (see [Removing the Battery](#)) before working inside the computer.
- 

### Removing the Touch Pad Module

1. Follow the procedures in [Before You Begin](#).
2. Remove the battery (see [Removing the Battery](#)).
3. Remove the keyboard (see [Removing the Keyboard](#)).
4. Remove the hard-drive assembly (see [Removing the Hard-Drive Assembly](#)).
5. Remove the palm rest assembly (see [Removing the Palm Rest Assembly](#)).
6. Turn the palm rest assembly over and remove the four screws that secure the touch pad module to the palm rest.



1	screws (4)	2	touch pad module
---	------------	---	------------------


7. Lift the touch pad module off the palm rest.
- 

### Replacing the Touch Pad Module

1. Follow the procedures in [Before You Begin](#).
2. Use the alignment posts on the palm rest to correctly place the touch pad module. Replace the four screws that secure the touch pad module to the palm rest.
3. Replace the palm rest assembly (see [Replacing the Palm Rest Assembly](#)).
4. Replace the hard-drive assembly (see [Replacing the Hard-Drive Assembly](#)).

5. Replace the keyboard (see [Replacing the Keyboard](#)).

6. Replace the battery (see [Replacing the Battery](#)).

 **CAUTION:** Before turning on the computer, replace all screws and ensure that no stray screws remain inside the computer. Failure to do so may result in damage to the computer.

---

[Back to Contents Page](#)

[Back to Contents Page](#)

## Video Accelerator Card

Dell™ Inspiron™ 1012 Service Manual

- [Removing the Video Accelerator Card](#)
- [Replacing the Video Accelerator Card](#)

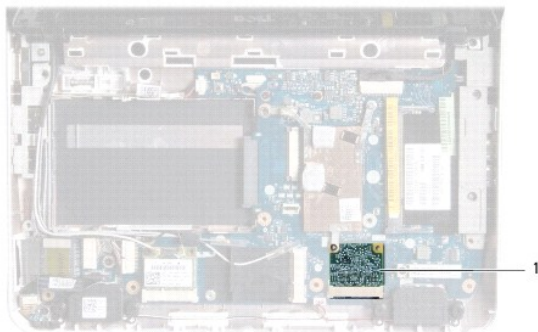
- WARNING:** Before working inside your computer, read the safety information that shipped with your computer. For additional safety best practices information, see the Regulatory Compliance Homepage at [www.dell.com/regulatory\\_compliance](http://www.dell.com/regulatory_compliance).
- CAUTION:** To avoid electrostatic discharge, ground yourself by using a wrist grounding strap or by periodically touching an unpainted metal surface (such as a connector on your computer).
- CAUTION:** Only a certified service technician should perform repairs on your computer. Damage due to servicing that is not authorized by Dell™ is not covered by your warranty.
- CAUTION:** To help prevent damage to the system board, remove the main battery (see [Removing the Battery](#)) before working inside the computer.
- NOTE:** Dell does not guarantee compatibility or provide support for video accelerator cards from sources other than Dell.
- NOTE:** Depending on the configuration of the computer when it was sold, the video accelerator card slot may or may not have a card installed.
- 

### Removing the Video Accelerator Card

1. Follow the procedures in [Before You Begin](#).
2. Remove the battery (see [Removing the Battery](#)).
3. Remove the keyboard (see [Removing the Keyboard](#)).
4. Remove the hard-drive assembly (see [Removing the Hard-Drive Assembly](#)).
5. Remove the palm rest assembly (see [Removing the Palm Rest Assembly](#)).
6. Remove the processor heat sink (see [Removing the Processor Heat Sink](#)).

**CAUTION:** When the video accelerator card is not in the computer, store it in protective antistatic packaging. For more information, see "Protecting Against Electrostatic Discharge" in the safety information that shipped with your computer.

7. Lift the video accelerator card out of the connector on the system board.





1	video accelerator card
---	------------------------

---


### Replacing the Video Accelerator Card

1. Follow the procedures in [Before You Begin](#).
2. Remove the new video accelerator card from its packaging.


 **CAUTION:** Use firm and even pressure to slide the card into place. If you use excessive force, you may damage the connector.

 **CAUTION:** The connectors are keyed to ensure correct insertion. If you feel resistance, check the connectors on the card and on the system board, and realign the card.

3. Insert the video accelerator card connector at a 45-degree angle into the connector on the system board.
4. Press the other end of the video accelerator card down into the slot on the system board and replace the processor heat sink (see [Replacing the Processor Heat Sink](#)).
5. Replace the palm rest assembly (see [Replacing the Palm Rest Assembly](#)).
6. Replace the hard-drive assembly (see [Replacing the Hard-Drive Assembly](#)).
7. Replace the keyboard (see [Replacing the Keyboard](#)).
8. Replace the battery (see [Replacing the Battery](#)).

 **CAUTION:** Before turning on the computer, replace all screws and ensure that no stray screws remain inside the computer. Failure to do so may result in damage to the computer.

9. Install the drivers and utilities for your computer, as required. For more information, see the *Dell Technology Guide*.

 **NOTE:** If you are installing a video accelerator card from a source other than Dell, you must install the appropriate drivers and utilities. For more generic driver information, see the *Dell Technology Guide*.

---

[Back to Contents Page](#)